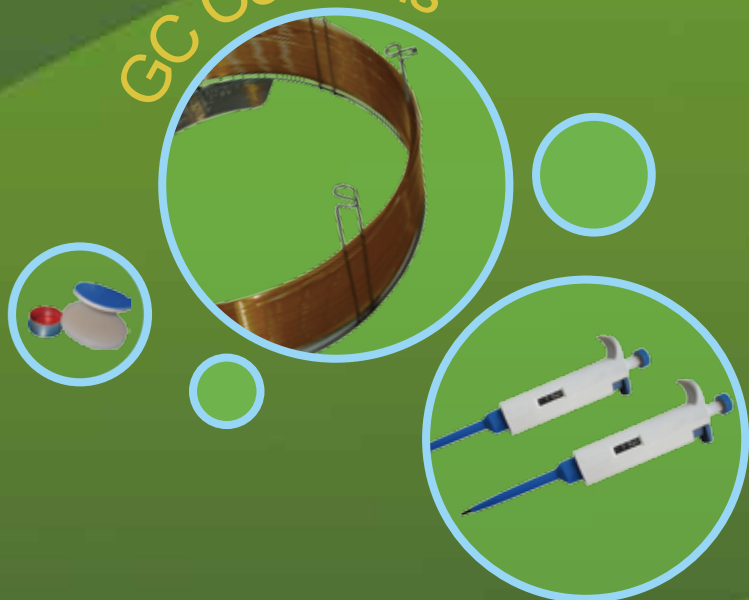


Accessories and Supplies

2011

GC Columns



Clarinet Syringe Filter



Vials, Caps, Septa



Best Value
Guaranteed Product Quality
Innovation to Benefit Customers



Asia

GEL

America

Bonna-Agela Technologies — A Global Supplier for Chromatography Solutions 2008 Message From Bonna-Agela Technologies

As Bonna-Agela technologies is poised to enter its fifth year with confidence and pride in its innovative separation, purification, and sample preparation products, we would like to thank our many loyal customers for your continuous support and trust. With your support and our effort in delivering the highest quality products to you, our company has grown remarkably. This has allowed us to expand our research and development effort, and thus introduce more innovative products to better service your application needs.

In 2007, we had tremendous accomplishments: We cataloged over one thousand different products. Our manufacturing and R&D operation was certified in compliance with ISO 9001 and passed many quality audits by customers and distributors, including VWR. As a global wide company, we not only have our own international sales force but have also formed a marketing alliance with VWR international. This will allow us to reach higher goals for 2008 and to provide our customers with even better quality products and faster service.

Our 2008 mission statement and commitment:

- Provide products with our INNOVATIVE technologies at the best PERFOR
- MANCE to COST ratio.
- Deliver products with guaranteed quality.
- Provide global support with quick responses

How to Place Orders

Our office is open from 9:00 am to 6:00 pm Eastern Standard Time, Monday through Friday.

To place an order or receive a quote, you may choose from the following contacts:

Mail Address: Bonna-Agela Technologies Inc.
2038A Telegraph Road, Wilmington, DE 19808, USA
Phone: (302) 438-8798
Fax: (302) 636-9339
Email: info@agela.com
On-line: www.agela.com

Please include the following information with your order or request: Account number (if you have one), purchase order number, contact name, organization name, shipping and billing address, telephone number, fax number or email address, product number, brief description and quantity, method of payment, preferred method of delivery. A written confirmation will be sent to you by email or fax. We accept business checks, wire transfers, and major credit cards as methods of payment.

Checks:

Please make checks payable to:
Bonna-Agela Technologies Inc. and send to:
Bonna-Agela Technologies Inc.
2038A Telegraph Road, Wilmington, DE 19808, USA

Wire Transfer:

Please contact us by phone, fax or email for account information.

Credit Cards:

Please include the card type and number, expiration date, and card holder name. Due to security concerns, please do not email the information. Please call or send a fax to provide your credit card information.

Terms and Conditions

PLEASE READ THESE TERMS BEFORE ORDERING. IF YOU HAVE ANY QUESTIONS, PLEASE DO NOT HESITATE TO CONTACT US AND OUR STAFF WILL BE GLAD TO ASSIST YOU.

Acceptance and Availability

All orders placed are subject to the agreement of Bonna-Agela Technologies Inc. The catalogue does not constitute an engagement of the company to sell all listed products. You are guaranteed to be notified at the time of ordering if the ordered items are in back-order or discontinued.

Price and Payment

The prices are in effect at the time of printing. Bonna-Agela Technologies reserves the right to change the prices without notice, though we do our best to provide our customers with advance notice. The prices quoted at the time of ordering will be guaranteed. The general payment term is net 30 days, F.O.B., Newark, Delaware, USA. However we reserve the right to ask for prepayment if customers' account information is not satisfactory. A 1.5% per month service charge will be added to delinquent accounts. If a purchase order is less than \$1000.00, a \$50.00 extra charge will be added to the invoice.

Changes

Bonna-Agela Technologies reserves the right to change product specifications, quantities, designs or prices without prior notice and without liability for such changes.

Shipping Policy

The standard shipping method is 2 day FedEx within the United States and Canada. We will try to accommodate requests for other shipping methods if they are available. All shipping and handling charges will be billed separately. Should you receive damaged goods, it is imperative that you notify us immediately and save all packing materials for inspection by the carrier.

Application

All products in this catalog should be used for laboratory or manufacturing use only. They are not intended for direct medicinal or food use. Bonna-Agela Technologies assumes no liability for any misuse of the products.

Returns

Bonna-Agela Technologies tries to accommodate all requests for returns of unused goods. However, return of some items may be restricted by the original manufacturers. Please contact us for return authorization before returning any items. A restocking charge may be applied to certain products.

Warranty

All Bonna-Agela Technologies products are warranted to be free of defects in materials and workmanship. They are not warranted for any other particular purpose. Bonna-Agela Technologies shall not under any circumstance be liable for any incidental, consequential or compensatory damage in conjunction with its products. The maximum liability shall not exceed the invoice price of the product.

CONTENTS

HPLC Columns and Media

■ Introduction	002
■ HPLC Columns by Family	002
■ Selected Solutions for Popular Applications	033
■ Ordering Information by the Type of Stationary Phases	044
■ HPLC Column Selection Guide	054
■ Applications	058
■ Appendix	075

SPE Columns and Wellplates

■ Cleanert SPE Columns, Wellplates and Media	078
■ The Development of SPE Method	103
■ Applications	106
■ Cross-reference Table	114

Purification Products

■ Preparative HPLC Columns	
■ Flash Chromatography Media and Columns	
■ Flash Chromatography System	

Accessories and Supplies

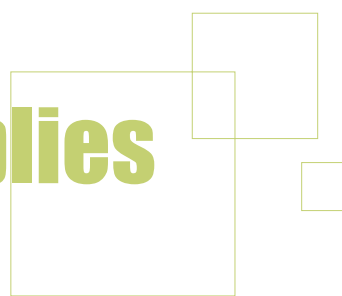
■ Filtration Products	146
■ Vials and Caps	153
■ HPLC Accessories and Supplies	157

GC Columns

127



Accessories and Supplies



● Clarinert™ Filtration Products	001
Syringe Filters	002
Membrane Filters	007
96-Well Filtration Plates and Collection Plates	008
Glass Filtration System	009
Disposable filtration funnels with 10µm frits	009
● Vials and Seals	010
2mL 12x32mm Screw Neck Vials and Caps	010
ND11 12x32mm Snap Ring Vials and Caps	010
ND11 2mL 12x32mm Crimp Neck Vials and Caps	011
4mL Screw Neck Vials and Caps	011
ND24 Screw Neck Vials and Caps	011
ND20 Crimp neck Headspace Vials and Caps	012
● HPLC Accessories and Supplies	012
UV Lamps	012
Pipettes and Accessories	013

ClarinerTM Filtration Products

- **High Quality** – Bonna-Agela is an ISO 9001 certified manufacturer; all of our products are guaranteed to meet our published specifications.
- **Comprehensive** – Reduce substantially the customers cost without sacrificing quality.
 - Comprehensive product lines
 - Global OEM manufacturing partner
- Important Features** – All filters's housing is made of high purity polypropylene
 - Female luer-lock inlets on all filters secure the fit to syringes
 - All filters are designed for use in both direction
 - All filters are autoclavable

- **Syringe Filters**
- **Membrane Filters**
- **96-Well Filtration Plates and Collection Plates**
- **Glass Filtration System**
- **Disposable filtration funnels with 10µm frits**

Syringe Filters

Type of Filters

- **Single Layer Filters:** Single membrane, commonly used, highly cost-effective; newly developed $\Phi 33\text{mm}$ Syringe Filters, with pore sizes of $0.22\mu\text{m}$ and $0.45\mu\text{m}$ are in stock.
- **Double Layer Filters:** A prefilter before the main membrane, which would avoid the damage to the soft main membrane from larger particles and clogging of the main membrane by colloidal particles, is good for the overall lifetime, process volume, and efficiency.
- **New! IC Syringe Filters:** The Nylon membrane filter is specially developed for IC filtration and is manufactured with advanced technology, with micro-pores evenly distributed with extremely low ion residual, which can effectively filter the particulate impurities.
- **Drying Filters:** Syringe filters with PTFE membrane, embedded with MgSO_4 , to combine the drying function with filtration in one single step for organic samples.
Simple, fast and convenient to use!
- **Metal Remover:** Syringe filters with PTFE membrane, embedded with metal scavenger resin to remove heavy metals from the organic samples at the same time of filtration, to eliminate the interference of the metal in subsequent tests, or to protect the HPLC columns from contamination.
Simple, fast and effective!
- **Organic Remover:** Syringe filters with nylon membrane, embedded with polystyrene resin to remove hydrophobic organic interference from samples for ion-chromatography, HPLC, molecular biology testing, etc.
Simple, convenient and reliable!
- **New! Sterilized Filters:** Filter the sample with biological activity or aseptic requirements; generally used as a fast, convenient, reliable sterilization and filtration tool in the lab. We supply many kinds of syringe filters, which can be used for filtration of 1mL to 300mL sample solutions.



Bonna-Agela Technologies

BETTER SOLUTION FOR CHROMATOGRAPHY

Specifications

Type	Diameter (mm)	Pore size (µm)	Pressure rating (bar)	Bubble Point rating(bar)	Water speed (mL/min/cm ²)	Air speed (L/min/cm ²)	Filtration /Hold-up Volume	Effective filter area(cm ²)
MCM	13	0.22	7	3.52	18	-	10mL/<25µL	0.65
		0.45	7	2.20	60	-		0.65
	25	0.22	5	3.52	18	-	100mL/<100µL	3.90
		0.45	5	2.20	60	-		3.90
Nylon	13	0.22	7	2.80	25	-	10mL/<25µL	0.65
		0.45	7	2.50	75	-		0.65
	25	0.22	5	2.80	25	-	100mL/<100µL	3.90
		0.45	5	2.50	75	-		3.90
PVDF	13	0.22	7	1.20	15	16	10mL/<25µL	0.65
		0.45	7	0.56	35	20		0.65
	25	0.22	5	1.20	15	16	100mL/<100µL	3.90
		0.45	5	0.56	35	20		3.90
PTFE	13	0.22	7	1.00	24	5	10mL/<25µL	0.65
		0.45	7	0.63	60	8		0.65
	25	0.22	5	1.00	24	5	100mL/<100µL	3.90
		0.45	5	0.63	60	8		3.90
PES	13	0.22	7	-	-	-	10mL/<25µL	0.65
		0.45	7	-	-	-		0.65
	25	0.22	5	-	-	-	100mL/<100µL	3.90
		0.45	5	-	-	-		3.90
Reg. Cellulose	13	0.22	7	-	-	-	10mL/<25µL	0.65
		0.45	7	-	-	-		0.65
	25	0.22	5	-	-	-	100mL/<100µL	3.90
		0.45	5	-	-	-		3.90

Selection Guide

Material Type	Characteristics
MCM (Hydrophilic)	Remove the particle from aqueous; Can be high temperature sterilized. Low protein-binding.
Nylon	Good flexibility and chemical compatibility (avoid strong acid and strong organic solution).
PTFE (Hydrophobic)	Broad chemical compatibility (compatible to any common solvents). Low protein-binding; Can be high temp. sterilized repeatedly; Low extractable; For use with high aqueous solution, pre-wet the filter membrane with MeOH, then rinse with DI water before filtering samples.
PVDF (Hydrophilic, Hydrophobic)	Low extractable; Low protein-binding; Broad chemical compatibility (avoid strong basic solution); Hydrophobic : for use with organic solution; Hydrophilic: can be used with high aqueous solution without pre-wet steps.
PES (Hydrophilic)	Broad chemical compatibility; Apply to high-throughput, high efficient filtration; Low protein-binding.
Reg. Cellulose (Hydrophilic)	Low protein-binding; Better strength than MCM.

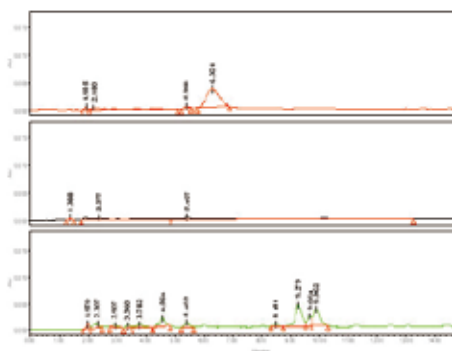
Chemical Compatibility

The introduction of extra impurities (extractables) is undesired; we should minimize the extractables during sample preparation. Extractables are often the result of inappropriate choice of materials, improper operation of the device during the manufacturing process, or downstream particle shedding. Particular attention should be paid to potential impurities from the membrane and housing material. The membranes used in Bonna-Agela's Clarinert Filters are extensively tested to determine their compatibility with various HPLC solvents.

Material	MCM	R.C	Nylon	PTEE	Material	MCM	R.C	Nylon	PTEE
1-hexanol	R	R	R	R	glycol	R	R	R	R
CH ₃ COOH,10%	LR	R	-	R	formic acid, 25%	LR	R	-	R
acetone	NR	R	R	R	n-hexane	R	R	R	R
acetonitrile	NR	R	R	NR	HCl,25%	NR	R	NR	R
fatty hydrocarbon	R	R	R	R	isopropanol	R	R	R	R
ammonia,1M	R	R	R	R	methanol	R	R	LR	R
aromatic hydrocarbons	R	R	N/A	R	nitrous acid,25%	LR	R	NR	R
benzene	R	R	R	R	pentane	R	R	R	R
boric acid	R	R	LR	R	phosphoric acid,25%	R	R	LR	R
tetrachloromethane	LR	LR	NR	R	phosphoric acid,45%	LR	LR	LR	R
carboxylic acid	R	R	NR	R	KOH,1M	NR	LR	NR	R
chloroacetic acid	NR	NR	NR	R	mineral salt in water	R	R	R	R
chloroform	NR	NR	R	LR	NaOH,1M	LR	NR	NR	R
cyclohexane	LR	LR	R	R	cellon	LR	R	LR	R
cyclohexanol	R	R	R	R	tetrahydrofuran	NR	R	R	LR
aether	LR	LR	R	LR	toluene	R	R	R	R
DMF	NR	NR	R	R	acetocastin,10%	NR	NR	LR	R
DMSO	NR	NR	N/A	R	methyl chloroform	LR	R	LR	R
alcohol=<98%	R	R	R	R	chlorylene	LR	R	LR	R
ethyl acetate	NR	NR	R	R	xylene	R	R	R	R
chloroethylene	LR	LR	R	R					

Remarks: R(Resistant), LR(Limited Resistant), NR (Not Resistant)

Comparison of Clean Performance of Three Brands' Filters



Instrument: Waters 600e Pump, 717 Auto-sampling, 2487UV
 Detector Column: Venusil ASB C18, 4.6×250mm, 5µm;
 Mobile Phase: Water: ACN= 22:78;
 Wave Length: 251nm

Bonna-Agela Technologies

BETTER SOLUTION FOR CHROMATOGRAPHY

Ordering Information (with two different packages)



★ Single Layer & Double Layer

Membrane Type	Pore Size	Qty	Cat.No.	Qty	Cat.No.
Mixed cellulose(acetate and nitrate) syringe filters					
13mm	0.22µm	200	AS011320	100	AS011320-T
	0.45µm	200	AS011345	100	AS011345-T
25mm	0.22µm	100	AS012520	100	AS012520-T
	0.45µm	100	AS012545	100	AS012545-T
33mm	0.22µm	100	AS013320	100	AS013320-T
	0.45µm	100	AS013345	100	AS013345-T
13mm with glass prefilter	0.22µm	200	AS011320-G	100	AS011320-GT
	0.45µm	200	AS011345-G	100	AS011345-GT
25mm with glass prefilter	0.22µm	100	AS012520-G	100	AS012520-GT
	0.45µm	100	AS012545-G	100	AS012545-GT
33mm with glass prefilter	0.22µm	100	AS013320-G	100	AS013320-GT
	0.45µm	100	AS013345-G	100	AS013345-GT
Nylon syringe filters					
13mm	0.22µm	200	AS021320	100	AS021320-T
	0.45µm	200	AS021345	100	AS021345-T
25mm	0.22µm	100	AS022520	100	AS022520-T
	0.45µm	100	AS022545	100	AS022545-T
33mm	0.22µm	100	AS023320	100	AS023320-T
	0.45µm	100	AS023345	100	AS023345-T
13mm with PP prefilter	0.22µm	200	AS021320-P	100	AS021320-PT
	0.45µm	200	AS021345-P	100	AS021345-PT
25mm with PP prefilter	0.22µm	100	AS022520-P	100	AS022520-PT
	0.45µm	100	AS022545-P	100	AS022545-PT
33mm with PP prefilter	0.22µm	100	AS023320-P	100	AS023320-PT
	0.45µm	100	AS023345-P	100	AS023345-PT
Hydrophobic PVDF syringe filters					
13mm	0.22µm	200	AS031320	100	AS031320-T
	0.45µm	200	AS031345	100	AS031345-T
25mm	0.22µm	100	AS032520	100	AS032520-T
	0.45µm	100	AS032545	100	AS032545-T
33mm	0.22µm	100	AS033320	100	AS033320-T
	0.45µm	100	AS033345	100	AS033345-T
13mm with PP prefilter	0.22µm	200	AS031320-P	100	AS031320-PT
	0.45µm	200	AS031345-P	100	AS031345-PT
25mm with PP prefilter	0.22µm	100	AS032520-P	100	AS032520-PT
	0.45µm	100	AS032545-P	100	AS032545-PT
33mm with PP prefilter	0.22µm	100	AS033320-P	100	AS033320-PT
	0.45µm	100	AS033345-P	100	AS033345-PT

Membrane Type	Pore Size	Qty	Cat.No.	Qty	Cat.No.
Hydrophobic PTFE syringe filters					
13mm	0.22µm	200	AS041320	100	AS041320-T
	0.45µm	200	AS041345	100	AS041345-T
	1µm	200	AS041301	100	AS041301-T
25mm	0.22µm	100	AS042520	100	AS042520-T
	0.45µm	100	AS042545	100	AS042545-T
	1µm	100	AS042501	100	AS042501-T
	5µm	100	AS042505	100	AS042505-T
33mm	0.22µm	100	AS043320	100	AS043320-T
	0.45µm	100	AS043345	100	AS043345-T
	1µm	100	AS043301	100	AS043301-T
13mm with PP prefilter	0.22µm	200	AS041320-P	100	AS041320-PT
	0.45µm	200	AS041345-P	100	AS041345-PT
25mm with PP prefilter	0.22µm	100	AS042520-P	100	AS042520-PT
	0.45µm	100	AS042545-P	100	AS042545-PT
	1µm	100	AS042501-P	100	AS042501-PT
	5µm	100	AS042505-P	100	AS042505-PT
33mm with PP prefilter	0.22µm	100	AS043320-P	100	AS043320-PT
	0.45µm	100	AS043345-P	100	AS043345-PT
Polyethersulfone (PES) syringe filters					
13mm	0.22µm	200	AS051320	100	AS051320-T
	0.45µm	200	AS051345	100	AS051345-T
25mm	0.22µm	100	AS052520	100	AS052520-T
	0.45µm	100	AS052545	100	AS052545-T
33mm	0.22µm	100	AS053320	100	AS053320-T
	0.45µm	100	AS053345	100	AS053345-T
13mm with glass prefilter	0.22µm	200	AS051320-G	100	AS051320-GT
	0.45µm	200	AS051345-G	100	AS051345-GT
25mm with glass prefilter	0.22µm	100	AS052520-G	100	AS052520-GT
	0.45µm	100	AS052545-G	100	AS052545-GT
33mm with glass prefilter	0.22µm	100	AS053320-G	100	AS053320-GT
	0.45µm	100	AS053345-G	100	AS053345-GT
Regenerated cellulose (RC) syringe filters					
13mm	0.22µm	200	AS061320	100	AS061320-T
	0.45µm	200	AS061345	100	AS061345-T
25mm	0.22µm	100	AS062520	100	AS062520-T
	0.45µm	100	AS062545	100	AS062545-T
33mm	0.22µm	100	AS063320	100	AS063320-T
	0.45µm	100	AS063345	100	AS063345-T
13mm with glass prefilter	0.22µm	200	AS061320-G	100	AS061320-GT
	0.45µm	200	AS061345-G	100	AS061345-GT
25mm with glass prefilter	0.22µm	100	AS062520-G	100	AS062520-GT
	0.45µm	100	AS062545-G	100	AS062545-GT
33mm with glass prefilter	0.22µm	100	AS063320-G	100	AS063320-GT
	0.45µm	100	AS063345-G	100	AS063345-GT

Bonna-Agela Technologies

BETTER SOLUTION FOR CHROMATOGRAPHY



Membrane Type	Pore Size	Qty	Cat.No.	Qty	Cat.No.
Hydrophilic PVDF syringe filters					
13mm	0.22µm	200	AS071320	100	AS071320-T
	0.45µm	200	AS071345	100	AS071345-T
25mm	0.22µm	100	AS072520	100	AS072520-T
	0.45µm	100	AS072545	100	AS072545-T
33mm	0.22µm	100	AS073320	100	AS073320-T
	0.45µm	100	AS073345	100	AS073345-T
13mm with glass prefilter	0.22µm	200	AS071320-G	100	AS071320-GT
	0.45µm	200	AS071345-G	100	AS071345-GT
25mm with glass prefilter	0.22µm	100	AS072520-G	100	AS072520-GT
	0.45µm	100	AS072545-G	100	AS072545-GT
33mm with glass prefilter	0.22µm	100	AS073320-G	100	AS073320-GT
	0.45µm	100	AS073345-G	100	AS073345-GT

20um syringe filters

13mm	20µm	200	AS201300	100	AS201300-T
25mm	20µm	100	AS202500	100	AS202500-T
33mm	20µm	100	AS203300	100	AS203300-T
13mm with PP prefilter	20µm	200	AS201300-P	100	AS201300-PT
25mm with PP prefilter	20µm	100	AS202500-P	100	AS202500-PT
33mm with PP prefilter	20µm	100	AS203300-P	100	AS203300-PT

★ IC Syringe Filters

Membrane Type	Pore Size	Qty	Cat.No.	Qty	Cat.No.
IC-Nylon syringe filters					
13mm	0.22µm	200	IC021320	100	IC021320-T
	0.45µm	200	IC021345	100	IC021345-T
25mm	0.22µm	100	IC022520	100	IC022520-T
	0.45µm	100	IC022545	100	IC022545-T

★ Drying Filter

Membrane Type	Pore Size	Qty	Cat.No.	Qty	Cat.No.
Drying Filter					
13mm	0.45µm	200	AD041345	100	AD041345-T
25mm	0.45µm	100	AD042545	100	AD042545-T

★ Metal Remover

Membrane Type	Pore Size	Qty	Cat.No.	Qty	Cat.No.
Metal Remover					
13mm	0.45µm	200	MR041345	100	MR041345-T
25mm	0.45µm	100	MR042545	100	MR042545-T

★ Organic Remover

Membrane Type	Pore Size	Qty	Cat.No.	Qty	Cat.No.
Organic Remover					
13mm	0.45µm	200	OR021345	100	OR021345-T
25mm	0.45µm	100	OR022545	100	OR022545-T

★ Sterilized Syringe Filters

Membrane Type	Pore Size	Qty	Cat.No.
Mixed cellulose(acetate and nitrate) syringe filters			
13mm	0.22µm	96	AS911320
	0.45µm	96	AS911345
25mm	0.22µm	100	AS912520
	0.45µm	100	AS912545
Nylon syringe filters			
13mm	0.22µm	96	AS921320
	0.45µm	96	AS921345
25mm	0.22µm	100	AS922520
	0.45µm	100	AS922545
Hydrophobic PVDF syringe filters			
13mm	0.22µm	96	AS931320
	0.45µm	96	AS931345
25mm	0.22µm	100	AS932520
	0.45µm	100	AS932545
Hydrophobic PTFE syringe filters			
13mm	0.22µm	96	AS941320
	0.45µm	96	AS941345
25mm	0.22µm	100	AS942520
	0.45µm	100	AS942545
Polyethersulfone (PES) syringe filters			
13mm	0.22µm	96	AS951320
	0.45µm	96	AS951345
25mm	0.22µm	100	AS952520
	0.45µm	100	AS952545
Regenerated cellulose (RC) syringe filters			
13mm	0.22µm	96	AS961320
	0.45µm	96	AS961345
25mm	0.22µm	100	AS962520
	0.45µm	100	AS962545



Membrane Filters

Ordering Information

Membrane Type	Pore Size	Qty	Cat.No.
Mixed cellulose(acetate and nitrate)			
13mm	0.22µm	200	AM011320
	0.45µm	200	AM011345
25mm	0.22µm	200	AM012520
	0.45µm	200	AM012545
50mm	0.22µm	100	AM015020
	0.45µm	100	AM015045





Membrane Type	Pore Size	Qty	Cat.No.
Nylon			
13mm	0.22µm	200	AM021320
	0.45µm	200	AM021345
25mm	0.22µm	200	AM022520
	0.45µm	200	AM022545
50mm	0.22µm	100	AM025020
	0.45µm	100	AM025045
Hydrophobic PVDF			
13mm	0.22µm	200	AM031320
	0.45µm	200	AM031345
25mm	0.22µm	200	AM032520
	0.45µm	200	AM032545
50mm	0.22µm	100	AM035020
	0.45µm	100	AM035045
Hydrophobic PTFE syringe filters			
13mm	0.22µm	200	AM041320
	0.45µm	200	AM041345
25mm	0.22µm	200	AM042520
	0.45µm	200	AM042545
50mm	0.22µm	100	AM045020
	0.45µm	100	AM045045
Polyethersulfone (PES)			
13mm	0.22µm	200	AM051320
	0.45µm	200	AM051345
25mm	0.22µm	200	AM052520
	0.45µm	200	AM052545
50mm	0.22µm	100	AM055020
	0.45µm	100	AM055045
Regenerated cellulose (RC)			
13mm	0.22µm	200	AM061320
	0.45µm	200	AM061345
25mm	0.22µm	200	AM062520
	0.45µm	200	AM062545
50mm	0.22µm	100	AM065020
	0.45µm	100	AM065045

96-Well Filtration Plates and Collection Plates

■ 96-well Protein Precipitation Plates:

The wide selectivity range of protein precipitation plates makes it possible to supply preparation methods for samples with complex matrices.

■ Features and Applications:

- ★ Use chemical inert material, pH tolerance range: 1-13;
- ★ Compatible with automatic SPE or manual handling;
- ★ High throughput, superior to the traditional liquid-liquid extraction technique;
- ★ Dispense with stirring and centrifugal separation;
- ★ Larger specific surface area speeds up the extraction procedure;
- ★ Dispense with activating treatment.



Ordering Information

Type	Vol	Qty	Cat.No.
Filtration plate PP frits 20µm	2mL	10	FTPP2002-01
	1mL	10	FTPP2001-01
Filtration plate PTFE membrane 0.45µm	2mL	10	FTPF4502-01
	1mL	10	FTPF4501-01
Filtration plate packed with earth diatomaceous 100mg	2mL	10	FTFT1002-01
	1mL	10	FTFT1001-01
Protein precipitation plates and collection	2mL	10	PPPC1002-01
	1mL	10	PPPC1001-01
Collection plate, round bottom	2mL	50	CLCM0002-01
	1mL	50	CLCM0001-01
96 well cap mats	—	50	CLCM9600-0

Glass Filtration System

The system includes a borosilicate glass funnel, a sintered borosilicate glass membrane core on the neck, aluminum clamp, and borosilicate glass filter flask. It can be used with or without a membrane filter depending on the application requirement to filtrate organic or aqueous solution. It is also used for liquid degassing.

Funnel volumes: 300mL, 500mL

Pore size of the glass membrane core: 10µm

Flask volumes: 1000ml, 2000mL

Ordering Information

Funnel Volume (mL)	Flask Volume (mL)	Qty	Cat.No.
300	1000	ea	AM3100
500	2000	ea	AM5200

Disposable filtration funnels with 10µm frits

Part No.	Description	Qty (PK)
SLC0006-F	6mL	50
SLC0008-F	10mL	50
SLC0025-F	25mL	30
SLC0060-F	60mL	20
SLC0150-F	150mL	20



Vials and Seals

Bonna-Agela Technologies Inc offers a number of high quality vials, caps, seals and crimping tools. All of them are meet the high standard of the chromatographic applications. The difference of our offering from many other brand name venders is the cost to you. We offer lower price for the same products as many brand name's due to our lean cost structure and we provide personal assist to you to select right products.

2mL 12x32mm Screw Neck Vials and Caps

Vials

Description	Thread	Color	Cat. No.(100/pk)
Screw neck vials	Std 8-425	Clear	AV1000-0
Screw neck vials	Std 8-425	Amber	AV1010-0
Screw neck vials, graduated	Std 8-425	Clear	AV1001-0
Screw neck vials, graduated	Std 8-425	Amber	AV1011-0
Screw neck vials	Short 9-425	Clear	AV1100-0
Screw neck vials	Short 9-425	Amber	AV1110-0
Screw neck vials, graduated	Short 9-425	Clear	AV1101-0
Screw neck vials, graduated	Short 9-425	Amber	AV1111-0

Caps and Septa

Description	Thread	Cat. No.(100/pk)
Black screw caps;Red silicone/White PTFE septa	Std 8-425	AV1386-8002-B
Blue screw caps;Red Silicone/White PTFE septa	Short 9-425	AV1384-9501-B
Blue screw caps;White Silicone/Red PTFE septa, slitted	Short 9-425	AV1174-9501-B

ND11 12x32mm Snap Ring Vials and Caps

Vials

Description	Color	Vol.	Cat. No.(100/pk)
Snap ring Micro-vial PP	transparent	300µL	AV0003-P
Snap ring vials	Clear	2mL	AV3000-0
Snap ring vials	Amber	2mL	AV3101-0
Snap ring vials, graduated	Clear	2mL	AV3001-0
Snap ring vials, graduated	Amber	2mL	AV3011-0

Caps and Septa

Description	Cat. No.(100/pk)
Red Snap caps; White PTFE/Red silicone septa	AV1384-4103-B
Red Snap caps; Red PTFE/White silicone septa	AV1174-4103-B

ND11 2mL 12x32mm Crimp Neck Vials and Caps

Vials

Description	Thread	Color	Cat. No.(100/pk)
Crimp neck vials	Wide mouth	Clear	AV5001-0
Crimp neck vials	Wide mouth	Amber	AV5200-0
Crimp neck vials, graduated	Wide mouth	Clear	AV5111-0
Crimp neck vials, graduated	Wide mouth	Amber	AV5300-0

Caps and Septa

Description	Thread	Cat. No.(100/pk)
Silver Crimp caps; Orange Silicone/Clear FEP septa	Wide mouth	AV1490-1117-B

4mL Screw Neck Vials and Caps

Vials

Description	Thread	Color	Cat. No.(100/pk)
Screw neck vials	Std	Clear	AV7000-6
Screw neck vials, graduated	Std	Clear	AV7001-6
Screw neck vials	Std	Amber	AV7010-0
Screw neck vials, graduated	Std	Amber	AV7011-0

Caps and Septa

Description	Thread	Cat. No.(100/pk)
Screw caps close top; Nature PTFE/Nature silicone septa	Std	AV7400-0
Screw caps center hole; Red PTFE/White silicone septa	Std	AV7410-0

ND24 Screw Neck Vials and Caps

Vials

Description	Thread	Color	Vol.	Cat. No.(100/pk)
Screw neck vials,57×27.5mm	Std	Clear	20mL	AV7100-6
Screw neck vials,57×27.5mm	Std	Amber	20mL	AV7110-0
Screw neck vials,95×27.5mm	Std	Clear	40mL	AV7200-6
Screw neck vials,95×27.5mm	Std	Amber	40mL	AV7210-0
Screw neck vials,140×27.5mm	Std	Clear	60mL	AV7300-6
Screw neck vials,140×27.5mm	Std	Amber	60mL	AV7310-0

Caps and Septa

Description	Thread	Cat. No.(100/pk)
Screw caps center hole; Nature PTFE/Nature silicone septa	Std	AV7910-0
Screw caps close top; Nature PTFE/Nature silicone septa	Std	AV7920-0

ND20 Crimp neck Headspace Vials and Caps

Vials

Description	Color	Vol.	Cat. No.(100/pk)
Crimp neck headspace vials,23×75.5mm, rounded bottom(PE)	Clear	20mL	AV8000-7
Crimp neck headspace vials,22.5×75.5mm, long neck, rounded bottom	Clear	20mL	AV8100-7
Crimp neck headspace vials,22.5×75.5mm,long neck, flat bottom	Clear	20mL	AV8110-7

Caps and Septa

Description	Cat. No.(100/pk)
Silver Crimp caps; White silicone/ PTFE septa	AV0720-2007-B
Silver Crimp caps; White silicone/ PTFE septa	AV0720-0800-B

HPLC Accessories and Supplies

UV Lamps

Bonna-Agela Technologies offers UV lamps of the same or better quality as a low cost replacement for many of those manufactured by original HPLC manufacturers, such as Shimadzu.

Shimadzu

Original Instrument Part Number	Agela Lamps Part Number
SPD-10A,2000h	SHL001
LC2010,2000h	SHL002
SPD-20A,2000h	SHL003
UV AA	SUV001



Pipettes and Accessories



Mechanical Pipette (Fixed Volume)

Cat No.	Volume (µL)	Cat No.	Volume (µL)
A722001	5	A722030	200
A722004	10	A722035	250
A722010	20	A722040	500
A722015	25	A722045	1000
A722020	50	A722050	2000
A722025	100	A722055	5000

Mechanical Pipette (Adjustable Volume)

Single Channel Pipette

Cat No.	Volume (µL)	Increment (µL)	Cat No.	Volume (µL)	Increment (µL)
A720005	0.1-2.5	0.05	A720070	20-200	1
A720000	0.5-10	0.1	A720030	50-200	1
A720020	5-50	0.5	A720060	100-1000	5
A720080	2-20	0.5	A720040	200-1000	5
A720050	10-100	1	A720110	1000-5000	50

8-Channel Pipette

Cat No.	Volume (µL)	Increment (µL)
A720210	0.5-10	0.1
A720220	5-50	0.5
A720240	50-300	5

12-Channel Pipette

Cat No.	Volume (µL)	Increment (µL)
A720310	0.5-10	0.1
A720320	5-50	0.5
A720340	50-300	5

Pipette Tips

Cat No.	Qty	Cat No.	Qty
AD781348	FT10µL	AD780019	FT1000µL
AD781349	FT10µL	AD780020	FT1000µL
AD780006	FT300µL	AD780046	FT1200µL
AD780007	FT300µL		



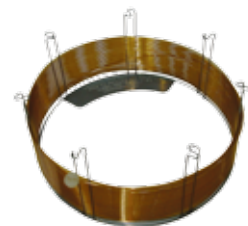
GC Columns

● DA-1	015
● DA-1MS	016
● DA-5	016
● DA-5MS	017
● DA-35MS	018
● DA-1701	018
● DA-CarBoWax 20M	019
● DA-FFAP	019
● DA-INOWAX	020
● DA-50+MS	021
● DA-1301	022
● DA-624	022
● DA-PLOT Al ₂ O ₃ "KCl"	023
● DA-PLOT Al ₂ O ₃ "M"	023
● DA-PLOT Al ₂ O ₃ "S"	024
● DA-PLOT MoleSieve	025
● DA-PLOT GasPro	025
● DA-Blood Alcohol Column	026
● DA-PLOT Q	026
● DA-PLOT U	027
● GC Accessories and Supplies	028
Septa	028
Injection Port Liners	028
Ferrules	029
Column Scribe	032
1/32" Ultra Low Mass External Unions	032

DA-1

- 100% bonded and crosslinked dimethylpolysiloxane
- Non-polar, equivalent to USP phase G2
- Solvent rinseable and high temperature limit
- Wide range of column dimensions and stationary phase film thicknesses
- Low column bleed, inert surface and high efficiency
- Most popular for general applications

Similar Phases: DB-1, HP-1, Ultra-1, SPB-1, Rxi-1, CP-Si 5CB, BP-1, ZB-1, AT-1, MDN-1, OV-1, OV101



Ordering Information

ID(mm)	Length(m)	Film(μm)	Temperature Limit(°C)	Cat.No.
0.25	15	0.1	-60 to 325/350	0125-1501
0.25	15	0.25	-60 to 325/350	0125-1502
0.25	15	1	-60 to 325/350	0125-1510
0.25	30	0.1	-60 to 325/350	0125-3001
0.25	30	0.25	-60 to 325/350	0125-3002
0.25	30	1	-60 to 325/350	0125-3010
0.25	60	0.25	-60 to 325/350	0125-6002
0.25	60	1	-60 to 325/350	0125-6010
0.25	100	0.5	-60 to 325/350	0125-0010
0.32	15	0.25	-60 to 325/350	0132-1502
0.32	15	1	-60 to 325/350	0132-1510
0.32	25	0.17	-60 to 325/350	0132-2501
0.32	25	0.52	-60 to 325/350	0132-2505
0.32	25	1.05	-60 to 325/350	0132-2510
0.32	30	0.1	-60 to 325/350	0132-3001
0.32	30	0.25	-60 to 325/350	0132-3002
0.32	30	1	-60 to 325/350	0132-3010
0.32	30	3	-60 to 325/280	0132-3030
0.32	30	4	-60 to 325/280	0132-3040
0.32	30	5	-60 to 325/280	0132-3050
0.32	50	0.17	-60 to 325/350	0132-5001
0.32	50	0.52	-60 to 325/350	0132-5005
0.32	50	1.05	-60 to 300/320	0132-5010
0.32	60	0.25	-60 to 325/350	0132-6002
0.32	60	1	-60 to 300/320	0132-6010
0.32	60	5	-60 to 260/280	0132-6050
0.53	5	0.15	-60 to 325/360	0153-0501
0.53	5	0.88	-60 to 325/360	0153-0508
0.53	5	2.65	-60 to 260/280	0153-0526
0.53	7.5	5	-60 to 260/280	0153-0750
0.53	10	0.88	-60 to 300/320	0153-1008
0.53	10	2.65	-60 to 260/280	0153-1026
0.53	15	0.15	-60 to 320/360	0153-1501
0.53	15	1.5	-60 to 300/320	0153-1515
0.53	15	3	-60 to 260/280	0153-1530
0.53	15	5	-60 to 260/280	0153-1550
0.53	30	0.88	-60 to 300/320	0153-3008
0.53	30	1.5	-60 to 300/320	0153-3015
0.53	30	2.65	-60 to 260/280	0153-3026
0.53	30	3	-60 to 260/280	0153-3030
0.53	30	5	-60 to 260/280	0153-3050
0.53	60	5	-60 to 260/280	0153-6050



Bonna-Agela Technologies

BETTER SOLUTION FOR CHROMATOGRAPHY

DA-1MS

- Identical selectivity to DA-1, but with much lower column bleed
 - Ideal for GC-MS analysis and first choice of new method development
- Similar Phases:** HP-1MS, DB-1MS, BPX-1, AT-1MS, ZB-1, Rxi-1, CP-Sil 5CB

Ordering Information

ID(mm)	Length(m)	Film(μ m)	Temperature Limit($^{\circ}$ C)	Cat.No.
0.25	15	0.25	-60 to 325/350	1125-1502
0.25	30	0.1	-60 to 325/350	1125-3001
0.25	30	0.25	-60 to 325/350	1125-3002
0.25	30	0.5	-60 to 325/350	1125-3005
0.25	30	1	-60 to 325/350	1125-3010
0.25	60	0.25	-60 to 325/350	1125-6002
0.32	15	0.25	-60 to 325/350	1132-1502
0.32	25	0.52	-60 to 325/350	1132-2505
0.32	30	0.1	-60 to 325/350	1132-3001
0.32	30	0.25	-60 to 325/350	1132-3002
0.32	30	1	-60 to 325/350	1132-3010
0.32	60	0.25	-60 to 325/350	1132-6002

DA-5

- 5% phenyl, 95% methylpolysiloxane, bonded and crosslinked
- Non-polar, equivalent to USP phase G27
- Solvent rinseable and high temperature limit
- Wide range of column dimensions and stationary phase film thicknesses
- Low column bleed, inert surface with neutral surface and high efficiency
- Most popular for general applications

Similar Phases: DB-5, HP-5, Ultra-5, SPB-5, Rxi-5, CP-Sil 8CB, BP-5, ZB-5, AT-5, MDN-5, OV-5, SE-52, SE-54

Ordering Information

ID(mm)	Length(m)	Film(μ m)	Temperature Limit($^{\circ}$ C)	Cat.No.
0.25	15	0.25	-60 to 325/350	0525-1502
0.25	15	1	-60 to 325/350	0525-1510
0.25	30	0.1	-60 to 325/350	0525-3001
0.25	30	0.25	-60 to 325/350	0525-3002
0.25	30	1	-60 to 325/350	0525-3010
0.25	60	0.25	-60 to 325/350	0525-6002
0.25	60	1	-60 to 325/350	0525-6010
0.32	15	0.25	-60 to 325/350	0532-1502
0.32	15	1	-60 to 325/350	0532-1510
0.32	25	0.17	-60 to 325/350	0532-2501
0.32	25	0.52	-60 to 325/350	0532-2505
0.32	25	1.05	-60 to 325/350	0532-2510
0.32	30	0.1	-60 to 325/350	0532-3001
0.32	30	0.25	-60 to 325/350	0532-3002

ID(mm)	Length(m)	Film(μ m)	Temperature Limit($^{\circ}$ C)	Cat.No.
0.32	30	0.5	-60 to 325/350	0532-3005
0.32	30	1	-60 to 325/350	0532-3010
0.32	50	0.17	-60 to 325/350	0532-5001
0.32	50	0.52	-60 to 325/350	0532-5005
0.32	50	1.05	-60 to 325/350	0532-5010
0.32	60	0.25	-60 to 325/350	0532-6002
0.32	60	1	-60 to 260/280	0532-6010
0.53	10	2.65	-60 to 260/280	0553-1026
0.53	15	1.5	-60 to 300/320	0553-1515
0.53	15	5	-60 to 260/280	0553-1550
0.53	30	0.88	-60 to 300/320	0553-3008
0.53	30	1.5	-60 to 300/325	0553-3015
0.53	30	2.65	-60 to 260/280	0553-3026
0.53	30	5	-60 to 260/280	0553-3050

DA-5MS

- Identical selectivity to DB-5, but with much lower column bleed
- Best surface inertness for wide range of compounds
- Ideal for GC-MS analysis or new method development

Similar Phases: HP-5MS, DB-5MS, BPX-5MS, AT-5MS, Rxi-5MS, CP-Sil 8 CB

Ordering Information

ID(mm)	Length(m)	Film(μ m)	Temperature Limit($^{\circ}$ C)	Cat.No.
0.25	15	0.1	-60 to 325/350	1525-1501
0.25	15	0.25	-60 to 325/350	1525-1502
0.25	15	0.5	-60 to 325/350	1525-1505
0.25	15	1	-60 to 325/350	1525-1510
0.25	30	0.1	-60 to 325/350	1525-3001
0.25	30	0.25	-60 to 325/350	1525-3002
0.25	30	0.5	-60 to 325/350	1525-3005
0.25	30	1	-60 to 325/350	1525-3010
0.25	60	0.1	-60 to 325/350	1525-6001
0.25	60	0.25	-60 to 325/350	1525-6002
0.25	60	0.5	-60 to 325/350	1525-6005
0.25	60	1	-60 to 325/350	1525-6010
0.32	15	0.1	-60 to 325/350	1532-1501
0.32	15	0.25	-60 to 325/350	1532-1502
0.32	15	0.5	-60 to 325/350	1532-1505
0.32	15	1	-60 to 325/350	1532-1510
0.32	25	0.52	-60 to 325/350	1532-2505
0.32	30	0.1	-60 to 325/350	1532-3001
0.32	30	0.25	-60 to 325/350	1532-3002
0.32	30	0.5	-60 to 325/350	1532-3005
0.32	30	1	-60 to 325/350	1532-3010
0.32	60	0.1	-60 to 325/350	1532-6001
0.32	60	0.25	-60 to 325/350	1532-6002
0.32	60	0.5	-60 to 325/350	1532-6005
0.32	60	1	-60 to 325/350	1532-6010



Bonna-Agela Technologies

BETTER SOLUTION FOR CHROMATOGRAPHY

DA-35MS

- Bonded and 35% phenyl backbone 65% dimethylsiloxane phase
- Equivalent to USP phase G42
- Inert to many active compounds
- Low column bleed to improve detection sensitivity and quantitation
- Applications: Acroclors, PCBs, amines, pesticides, pharmaceutical molecules.

Similar Phases: HP-35MS, DB-35, BPX-35, AT-35, Rxi-35, SPB-35

Ordering Information

ID(mm)	Length(m)	Film(μ m)	Temperature Limit($^{\circ}$ C)	Cat.No.
0.25	15	0.25	40 to 320/340	3525-1502
0.25	30	0.15	40 to 320/340	3525-3001
0.25	30	0.25	40 to 320/340	3525-3002
0.25	60	0.25	40 to 320/340	3525-6002
0.32	15	0.25	40 to 320/340	3532-1502
0.32	30	0.25	40 to 320/340	3532-3002
0.32	60	0.25	40 to 320/340	3532-6002
0.53	15	1	40 to 300/320	3553-1510
0.53	30	0.5	40 to 300/320	3553-3005
0.53	30	1	40 to 300/320	3553-3010

DA-1701

- Bonded and crosslinked 14% Cyanopropyl-phenyl 86% dimethylsiloxane phase
- Low to mid polarity
- Inert to many active compounds
- Applications: pesticides, herbicides, halogenates. Good confirmation of analysis of active compounds on DA-5MS columns.

Similar Phases: DB-1701, ZB-1701, BP-10, Rxi-1701, CP-Sil 19 CB

Ordering Information

ID(mm)	Length(m)	Film(μ m)	Temperature Limit($^{\circ}$ C)	Cat.No.
0.25	15	0.15	-20 to 280/300	6125-1501
0.25	15	0.25	-20 to 280/300	6125-1502
0.25	15	1	-20 to 280/300	6125-1510
0.25	30	0.15	-20 to 280/300	6125-3001
0.25	30	0.25	-20 to 280/300	6125-3002
0.25	30	1	-20 to 280/300	6125-3010
0.25	60	0.15	-20 to 280/300	6125-6001
0.25	60	0.25	-20 to 280/300	6125-6002
0.25	60	1	-20 to 280/300	6125-6010
0.32	15	0.15	-20 to 280/300	6125-1501

DA-CarBoWax 20M

- Polyethylene glycol (PEG), MW 20,000
- Non-Bonded non-crosslinked phase
- Polar phase, equivalent to USP phase G16
- Replacement of packed columns with Carbowax 20M modified

Ordering Information

ID(mm)	Length(m)	Film(μ m)	Temperature Limit($^{\circ}$ C)	Cat.No.
0.2	25	0.1	60 to 220	2220-2501
0.2	50	0.1	60 to 220	2220-5001
0.25	30	0.25	60 to 220	2225-3002
0.32	25	0.3	60 to 220	2232-2503
0.32	50	0.3	60 to 220	2232-5003
0.53	10	1.33	60 to 210	2253-1013
0.53	30	1.33	60 to 210	2253-3013

DA-FFAP

- Nitroterephthalic acid modified Polyethylene glycol (PEG)
- Bonded and crosslinked
- Non-alcohol/aqueous solvent rinseable
- High temperature limit
- Polar phase equivalent to USP phase G35
- Designed for the analysis of volatile fatty acids and phenols

Similar Phases: HP-FFAP, DB-FFAP, CB-WAX58 (FFAP) CB, Stabilwax-DA, BP-21, 007-CW, AT-100

Ordering Information

ID(mm)	Length(m)	Film(μ m)	Temperature Limit($^{\circ}$ C)	Cat.No.
0.25	15	0.25	60 to 240/250	2125-1502
0.25	30	0.25	60 to 240/250	2125-3002
0.32	15	0.25	60 to 240/250	2132-1502
0.32	25	0.5	60 to 240/250	2132-2505
0.32	30	0.25	60 to 240/250	2132-3002
0.32	50	0.5	60 to 240/250	2132-5005
0.53	10	1	60 to 240	2153-1010
0.53	15	1	60 to 240	2153-1510
0.53	30	1	60 to 240	2153-3010



Bonna-Agela Technologies

BETTER SOLUTION FOR CHROMATOGRAPHY

DA-INOWAX

- Bonded and crosslinked Polyethylene glycol (PEG)
- Solvent washable
- Highest temperature limits of bonded PEG phases
- Polar phase, equivalent to USP phase G16
- Wide applications of polar solvent analysis in food, pharma., cosmetics, petrochemical industries

Similar Phases: HP-INNOWax, DB-WAX, DB-WAXetr, SupelcoWAX 10, CP-WAX, 52-CB, CB-WAX, Stabilwax, BP-20, 007-CW, AT-Wax, Rxi-Wax, ZB-Wax, HP-20M

Ordering Information

ID(mm)	Length(m)	Film(μ m)	Temperature Limit($^{\circ}$ C)	Cat.No.
0.2	25	0.2	40 to 260/280	2020-2502
0.2	25	0.4	40 to 260/280	2020-2504
0.2	50	0.2	40 to 260/280	2020-5002
0.2	50	0.4	40 to 260/280	2020-5004
0.25	15	0.25	40 to 260/280	2025-1502
0.25	15	0.5	40 to 260/280	2025-1505
0.25	30	0.15	40 to 260/280	2025-3001
0.25	30	0.25	40 to 260/280	2025-3002
0.25	30	0.5	40 to 260/280	2025-3005
0.25	60	0.15	40 to 260/280	2025-6001
0.25	60	0.25	40 to 260/280	2025-6002
0.25	60	0.5	40 to 260/280	2025-6005
0.32	15	0.25	40 to 260/280	2032-1502
0.32	15	0.5	40 to 260/280	2032-1505
0.32	30	0.15	40 to 260/280	2032-3001
0.32	30	0.25	40 to 260/280	2032-3002
0.32	30	0.5	40 to 260/280	2032-3005
0.32	60	0.15	40 to 260/280	2032-6001
0.32	60	0.25	40 to 260/280	2032-6002
0.32	60	0.5	40 to 260/280	2032-6005
0.53	15	1	40 to 240/260	2053-1510
0.53	30	1	40 to 240/260	2053-3010
0.53	60	1	40 to 240/260	2053-6010

DA-50+MS

- Bonded and crosslinked 50% phenyl backbone 50% dimethylsiloxane phase
- Equivalent to USP phase G3
- Inert to many active compounds
- Low column bleed to improve detection sensitivity and quantization
- Applications: Common drug screens, phenols, PAHs, free steroids, pesticides, herbicides. Good confirmation of the analysis of active compounds on AB-5MS or AB-35MS columns

Similar Phases: HP-50⁺, DB -7, DB-17MS, BPX-50, AT-50, Rxi-50, SPB-50

Ordering Information

ID(mm)	Length(m)	Film(μm)	Temperature Limit(°C)	Cat.No.
0.2	12	0.16	40 to 320/340	5020-1201
0.2	12	0.31	40 to 320/340	5020-1203
0.2	25	0.16	40 to 320/340	5020-2501
0.2	25	0.31	40 to 320/340	5020-2503
0.2	50	0.31	40 to 320/340	5020-5003
0.25	15	0.15	40 to 320/340	5025-1501
0.25	15	0.25	40 to 320/340	5025-1502
0.25	15	0.5	40 to 320/340	5025-1505
0.25	30	0.15	40 to 320/340	5025-3001
0.25	30	0.25	40 to 320/340	5025-3002
0.25	30	0.5	40 to 320/340	5025-3005
0.25	60	0.25	40 to 320/340	5025-6002
0.32	15	0.15	40 to 320/340	5032-1501
0.32	15	0.25	40 to 320/340	5032-1502
0.32	15	0.5	40 to 320/340	5032-1505
0.32	30	0.15	40 to 320/340	5032-3001
0.32	30	0.25	40 to 320/340	5032-3002
0.32	30	0.5	40 to 320/340	5032-3005
0.32	60	0.25	40 to 320/340	5032-6002
0.32	60	0.5	40 to 320/340	5032-6005
0.53	15	1	40 to 300/320	5053-1510
0.53	30	0.5	40 to 300/320	5053-3005
0.53	30	1	40 to 300/320	5053-3010



Bonna-Agela Technologies

BETTER SOLUTION FOR CHROMATOGRAPHY

DA-1301

- Bonded and crosslinked 6% Cyanopropyl-phenyl 94% dimethylsiloxane phase
- Equivalent to USP phase G43, low to mid polarity
- Inert to many active compounds
- Applications: pesticides, herbicides, halogenates. Good confirmation of the analysis of active compounds on DA-5MS or DA-35MS columns

Similar Phases: HP-1301, DB-1301, BP-10, Rxi-1301

Ordering Information

ID(mm)	Length(m)	Film(μ m)	Temperature Limit($^{\circ}$ C)	Cat.No.
0.25	15	0.25	-20 to 280/300	6025-1502
0.25	15	1	-20 to 280/300	6025-1510
0.25	30	0.25	-20 to 280/300	6025-3002
0.25	30	1	-20 to 280/300	6025-3010
0.25	60	0.25	-20 to 280/300	6025-6002
0.25	60	1	-20 to 280/300	6025-6010
0.32	15	0.25	-20 to 280/300	6032-1502
0.32	15	1	-20 to 280/300	6032-1510
0.32	30	0.25	-20 to 280/300	6032-3002
0.32	30	1	-20 to 280/300	6032-3010
0.32	60	0.25	-20 to 280/300	6032-6002
0.32	60	1	-20 to 280/300	6032-6010
0.53	15	1	-20 to 260/280	6053-1510
0.53	30	1	-20 to 260/280	6053-3010
0.53	30	1.5	-20 to 260/280	6053-3015

DA-624

- Bonded and crosslinked specially designed stationary phase for EPA methods
- Mid-polarity
- Inert to many active compounds
- Applications: EPA methods: 501.3, 502.2, 503.1, 524.2, 601, 602, 8010, 8015, 8020, 8240,8260

Similar Phases: DB-624, ZB-624, AT-624, Rxi-624, CP-624

Ordering Information

ID(mm)	Length(m)	Film(μ m)	Temperature Limit($^{\circ}$ C)	Cat.No.
0.2	25	1.12	-20 to 260	6220-2511
0.25	30	1.4	-20 to 260	6225-3014
0.25	60	1.4	-20 to 260	6225-6014
0.32	30	1.8	-20 to 260	6232-3018
0.32	60	1.8	-20 to 260	6232-6018
0.53	30	3	-20 to 260	6253-3030
0.53	60	3	-20 to 260	6253-6030
0.53	75	3	-20 to 260	6253-7530

DA-PLOT Al₂O₃ "KCl"

- Least selective ("polar") aluminum oxide phase
- Deactivated with KCl
- Good baseline separation of most C1 to C10 hydrocarbons
- Olefins may co-elute with corresponding paraffin over C5
- Minimum surface adsorption of dienes and halocarbons
- ASTM recommended phase
- Preferred choice of hydrocarbon separation

Similar Phases: HP-PLOT Al₂O₃/KCL, GS-Alumina/KCL, CP-Al₂O₃/KCl PLOT, ZB-Alumina/KCl

Ordering Information

ID(mm)	Length(m)	Film(μm)	Temperature Limit(°C)	Cat.No.
0.25	25	5	-60 to 200/250	8125-2505
0.25	30	5	-60 to 200/250	8125-3005
0.32	15	8	-60 to 200/250	8132-1508
0.32	30	8	-60 to 200	8132-3008
0.32	50	8	-60 to 200	8132-5008
0.53	15	15	-60 to 200/250	8153-1515
0.53	30	15	-60 to 200	8153-3015
0.53	50	15	-60 to 200	8153-5015
0.53	60	15	-60 to 200	8153-6015

DA-PLOT Al₂O₃ "M"

- Strong selective (most "polar") aluminum oxide phase
- Deactivated with Na₂MoO₄ salt
- Mostly baseline separation of C1 to C10 hydrocarbons, good baseline separation of cyclopropane from propylene
- Accurate quantitations of dienes and halocarbons
- ASTM recommended phase
- Preferred choice of hydrocarbon separation

Similar Phases: HP-PLOT Al₂O₃/"M", GS-Alumina, ZB-Alumina

Ordering Information

ID(mm)	Length(m)	Film(μm)	Temperature Limit(°C)	Cat.No.
0.25	25	5	-60 to 200/250	8325-2505
0.25	30	5	-60 to 200/250	8325-3005
0.32	15	8	-60 to 200/250	8332-1508
0.32	30	8	-60 to 200	8332-3008
0.32	50	8	-60 to 200	8332-5008
0.53	15	15	-60 to 200/250	8353-1515
0.53	30	15	-60 to 200	8353-3015
0.53	50	15	-60 to 200	8353-5015
0.53	60	15	-60 to 200	8353-6015



Bonna-Agela Technologies

BETTER SOLUTION FOR CHROMATOGRAPHY

DA-PLOT Al₂O₃ "S"

- Good selective (mid "polar") aluminum oxide phase
- Deactivated with Na₂SO₄ salt
- Excellent baseline separation of C1 to C10 hydrocarbons, excellent of C3, C4 isomer baseline separations
- Less accurate quantitations of dienes and halocarbons
- ASTM recommended phase
- Preferred choice of hydrocarbon separation

Similar Phases: HP-PLOT Al₂O₃/"S", GS-Alumina, CP-Al₂O₃/Na₂SO₄ PLOT, ZB-Alumina, RT-Alumina

Ordering Information

ID(mm)	Length(m)	Film(μm)	Temperature Limit(°C)	Cat.No.
0.25	25	5	-60 to 200/250	8225-2505
0.25	30	5	-60 to 200/250	8225-3005
0.32	15	8	-60 to 200/250	8232-1508
0.32	30	8	-60 to 200	8232-3008
0.32	50	8	-60 to 200	8232-5008
0.53	15	15	-60 to 200/250	8253-1515
0.53	30	15	-60 to 200	8253-3015
0.53	50	15	-60 to 200	8253-5015
0.53	60	15	-60 to 200	8253-6015
0.25	25	5	-60 to 200/250	8325-2505
0.25	30	5	-60 to 200/250	8325-3005
0.32	15	8	-60 to 200/250	8332-1508
0.32	30	8	-60 to 200	8332-3008
0.32	50	8	-60 to 200	8332-5008
0.53	15	15	-60 to 200/250	8353-1515
0.53	30	15	-60 to 200	8353-3015
0.53	50	15	-60 to 200	8353-5015
0.53	60	15	-60 to 200	8353-6015

DA-PLOT MoleSieve

- Molecular Sieve, Zeolite, 5A
- Thin and thick coatings for push limit separations, e.g. Ar/O₂ separation at 35C, O₂/N₂ with 15sec
- Truly immobilized coating and smooth baseline workable for valve switching
- Preferred column to analyze fixed gases from hydrocarbon streams
- Elution order, H₂, He, Ne, O₂, N₂, CH₄, CO - Regeneration of performance from water/CO₂ adsorptions at 250 C for 3hr
- ASTM recommended phase
- Noble gas, air from methane, fuel cell, etc
- Often used with other PLOT columns for fixed gas separation from sample matrix

Similar Phases: HP-PLOT Al₂O₃/"S", GS-Alumina, CP-Al₂O₃/Na₂SO₄ PLOT, ZB-Alumina, RT-Alumina

Ordering Information

ID(mm)	Length(m)	Film(μm)	Temperature Limit(°C)	Cat.No.
0.32	5	12	-80 to 300	8432-0512
0.32	15	12	-80 to 300	8432-1512
0.32	30	12	-80 to 300	8432-3012
0.32	15	25	-80 to 300	8432-1525
0.32	30	25	-80 to 300	8432-3025
0.53	5	25	-80 to 300	8453-0525
0.53	15	25	-80 to 300	8453-1525
0.53	30	25	-80 to 300	8453-3025
0.53	15	50	-80 to 300	8453-1550
0.53	30	50	-80 to 300	8453-3050

DA-PLOT GasPro

- Proprietary Silica base phase
- Very inert to wide range of gases including sulfur gases and Freons, symmetric peak shapes
- Truly immobilized coating and smooth baseline workable for valve switching
- Preferred column to analyze sulfur gases from hydrocarbon streams and air
- Separation of CO and CO₂
- No effect of water on retention time
- Regeneration of performance from water adsorptions at 250 C for 3hr
- ASTM recommended phase
- GC-MS applicable

Similar Phases: GS-GasPro, CP-Silica PLOT

Ordering Information

ID(mm)	Length(m)	Film(μm)	Temperature Limit(°C)	Cat.No.
0.32	5	5	-80 to 260/300	8532-0505
0.32	15	5	-80 to 260/300	8532-1505
0.32	30	5	-80 to 260/300	8532-3005



Bonna-Agela Technologies

BETTER SOLUTION FOR CHROMATOGRAPHY

DA-Blood Alcohol Column

- Proprietary PLOT phase
- Reliable blood alcohol analysis
- Tolerance of direct sample injection
- Excellent confirmation column to other blood alcohol columns using t-butanol as internal standard

Ordering Information

ID(mm)	Length(m)	Film(μ m)	Temperature Limit($^{\circ}$ C)	Cat.No.
0.32	7.5	10	-80 to 260/280	8932-0710

DA-PLOT Q

- Divinylbenzene polymer particle, non-polar, close to traditional PoraPak Q
- Truly immobilized coating and smooth baseline workable for valve switching and liquid sample introduction at low temperatures
- Highest temperature limit, up to 280/300 C
- Baseline separation of Air, CO₂, water, sulfur gases, hydrogen chlorine, ammonia/light amines from hydrocarbons such as refinery stream, natural gas, and engine exhaust
- Excellent separation of C1 to C3 isomers, good separations of C3 to C12, halocarbons
- Excellent inertness and long lifetime of water/alcohol sample, a good secondary choice of wax column for alcohol analysis
- Excellent tolerance to strong acid/base sample without affecting retention time
- Good anti-oxidation at 280 C and fast regeneration of performance
- Observed slight sulfur gas, hydrogen chlorine, and amine absorption
- Water peak is tailing, but no effect on retention
- Good choice for analyzing low level solvent residues from wide samples, such as headspace, aqueous, or organic solutions
- Preferred column for residue analysis in petroleum industry, pharmaceutical, environmental, chemical weapon detection
- Preferred column to analyze polar compounds including oxygenates from hydrocarbon streams: natural gas, refinery gas, dienes, ethylene, propylene

Similar Phases: HP-PLOT Q, GS-Q, CP-PoraPLOT Q HT, Supel PLOT Q, Rt-Q, ZB-PLOT Q

Ordering Information

ID(mm)	Length(m)	Film(μ m)	Temperature Limit($^{\circ}$ C)	Cat.No.
0.32	15	15	-80 to 280/290	8632-1515
0.32	30	15	-80 to 280/290	8632-3015
0.53	15	30	-80 to 280/290	8653-1530
0.53	30	30	-80 to 280/290	8653-3030

DA-PLOT U

- Divinylbenzene and Ethylene glycol dimethacrylate copolymer particle, polar, close to traditional PoraPack U
- Truly immobilized coating and smooth baseline workable for valve switching and liquid sample introduction at low temperatures
- Improved separation and selectivity of Air, CO₂, water, sulfur gases, hydrogen chloride, ammonia/light amines from hydrocarbons
- Symmetric water peak shape, water elute after C3
- Excellent separation of C1 to C3 isomers, good separations of C3 to C12, halocarbons
- Excellent inertness and long lifetime of water/alcohol sample, a good secondary choice of wax column for alcohol analysis
- Excellent tolerance to strong acid/base sample without affecting retention time
- Observed slight sulfur gas, hydrogen chloride, and amine absorption
- Good choice for analyzing low level solvent residues from wide samples, such as headspace, aqueous, or organic solutions
- Preferred column for residue analysis in petroleum industry, pharmaceutical, environmental, chemical weapon detection
- Preferred column to analyze polar compounds including oxygenates from hydrocarbon streams: natural gas, refinery gas, dienes, ethylene, propylene

Similar Phases: HP-PLOT U, CP-PoraPLOT U

Ordering Information

ID(mm)	Length(m)	Film(μm)	Temperature Limit(°C)	Cat.No.
0.32	15	10	-80 to 190/200	8732-1510
0.32	30	10	-80 to 190	8732-3010
0.32	30	20	-80 to 190	8732-3020
0.53	15	20	-80 to 190/200	8753-1520
0.53	30	20	-80 to 190	8753-3020



GC Accessories and Supplies

Septa

Septa BTO

Extended temperature range, low-bleed

- Maximum temperature 400°C
- Virtually eliminates injection-port sticking
- Preconditioned packaged in glass to prevent contamination
- Each batch GC-FID tested.
- Ideal for use with low-bleed, "Mass Sepec" capillary columns

Cat.No.	Description
B02-1002	Septa BTO 5mm Center guide (50/pk)
B02-1040	Septa BTO 3/8" (9.5mm) (50/pk)
B02-1031	Septa BTO 11.5mm Center guide (50/pk)
B02-1001	Septa BTO 11mm (7/16") Center guide (50/pk)
B02-1032	Septa BOT 17mm, Center guide

Advanced Green 3

Extended temperature range, low-bleed

- True low-bleed, high temperature green septum.
- Maximum temperature 400°C

Cat.No.	Description
B02-1006	Septa AG3 5mm Center guide (50/pk)
B02-1005	Septa AG3 11mm (7/16") Center guide (50/pk)
B02-1041	Septa AG3 3/8" (9.5mm) (50/pk)

Injection Port Liners

Organosilane deactivated borosilicate glass (quartz where notes). Guaranteed inertness for phenols, organic acids and bases. Glass wool is also deactivated. These capillary injection port liners provide a clean, non-adsorptive surface for your samples. Regular replacement of the liner protects your capillary columns from potentially harmful non-volatiles that might otherwise deposit on your columns.

For Agilent Capillary GC Instruments

Cat.No.	Description	Qty.
B02-3004	Liner, 4mm, 79mm length, Single Taper w/Sil Wool	1/pk
B02-3005	Liner, 4mm, 79mm length, Single Taper w/Sil Wool	5/pk
B02-3007	Liner, 4mm, 79mm length, Single Taper w/Sil Wool	10/pk
B02-3008	Liner, 4mm, 79mm length, Double Taper	1/pk
B02-3009	Liner, 4mm, 79mm length, Double Taper	5/pk
B02-3011	Liner, 4mm, 79mm length, Double Taper	10/pk
B02-3012	Liner, 4mm, 79mm length, Single Taper	1/pk
B02-3013	Liner, 4mm, 79mm length, Single Taper	5/pk
B02-3015	Liner, 4mm, 79mm length, Single Taper	10/pk
B02-3019	Liner, 4mm, 79mm length, with Silanized Wool	1/pk
B02-3020	Liner, 4mm, 79mm length, with Silanized Wool	5/pk

Cat.No.	Description	Qty.
B02-3022	Liner,4mm,79mm length,with Silanized Wool	10/pk
B02-3030	Liner,2mm,79mm length,Splitless,Glass	1/pk
B02-3031	Liner,2mm,79mm length,Splitless,Glass	5/pk
B02-3032	Liner,2mm,79mm length,Splitless,Glass	10/pk
B02-3033	Liner,2mm,79mm length,Splitless,Quartz	1/pk
B02-3034	Liner,2mm,79mm length,Splitless,Quartz	5/pk
B02-3036	Liner,2mm,79mm length,Splitless,Quartz	10/pk

For Perkin-Elmer Capillary GCs

Cat.No.	Description	Qty.
B02-3201	Liner,4mm Split,92mm length,Autosystem for PerkinElmer GC	1/pk
B02-3202	Liner,4mm Split,92mm length,Autosystem for PerkinElmer GC	5/pk
B02-3203	Liner,4mm Split,92mm length,Autosystem for PerkinElmer GC	10/pk
B02-3204	Liner,4mm Split,92mm length Autosystem w/Wool for PerkinElmer (ea)	1/pk
B02-3205	Liner,4mm Split,92mm length Autosystem w/Wool for PerkinElmer (ea)	5/pk
B02-3206	Liner,4mm Split,92mm length Autosystem w/Wool for PerkinElmer (ea)	10/pk
B02-3207	Liner,2mm Splitless,92mm length,Autosystem for PerkinElmer GC	1/pk
B02-3208	Liner,2mm Splitless,92mm length,Autosystem for PerkinElmer GC	5/pk
B02-3209	Liner,2mm Splitless,92mm length,Autosystem for PerkinElmer GC	10/pk
B02-3210	Liner,100mm,Dimple Splitter for PerkinElmer GC	1/pk
B02-3211	SLiner,100mm,Dimple pliter for PerkinElmer GC	5/pk
B02-3212	Liner,100mm,Dimple Splitter for PerkinElmer GC	10/pk

For Varian Capillary GCs

Cat.No.	Description	Qty.
B02-3103	4mm Open Split w/Sil.Wool for Varian 1075/1077	1/pk
B02-3104	4mm Open Split w/Sil.Wool for Varian 1075/1077	5/pk
B02-3105	4mm Open Split w/Sil.Wool for Varian 1075/1077	10/pk
B02-3112	Liner,Frit Split for Varian 1075/1077	1/pk
B02-3113	Liner,Frit Split for Varian 1075/1077	5/pk
B02-3114	Liner,Frit Split for Varian 1075/1077	10/pk
B02-3115	Liner,4mm Open Split,for Varian 1075/1077	1/PK
B02-3116	Liner,4mm Open Split,for Varian 1075/1077	5/PK
B02-3117	Liner,4mm Open Split,for Varian 1075/1077	10/PK
B02-3118	Liner,74mm length,Splitless,Glass for Varian 1075/1077 (ea)	1/pk
B02-3119	Liner,74mm length,Splitless,Glass for Varian 1075/1077 (ea)	5/pk
B02-3120	Liner,74mm length,Splitless,Glass for Varian 1075/1077 (ea)	10/pk

Ferrules

Vespel Ferrules-Sold in Packages of 10

- Upper temperature limit:350°C
- 100% high-temperature DuPont polyimide
- Fairly hard;tends to seal
- permanently to the column

Capillary Column Ferrules	Cat.No.
1/16" to 0.3mm ferrules	B02-2126
1/16" to 0.4mm ferrules	B02-2127
1/16" to 0.5mm ferrules	B02-2128
1/16" to 0.8mm ferrules	B02-2129
1/16" to 1.0mm ferrules	B02-2130
1/16" to 1.2mm ferrules	B02-2131
1/16" to 0.4mm -Agilent style	B02-2012
1/16" to 0.5mm -Agilent style	B02-2013
1/16" to 0.8mm -Agilent style	B02-2014



Bonna-Agela Technologies

BETTER SOLUTION FOR CHROMATOGRAPHY

Straight Ferrules—for tubing with ODs as listed	Cat.No.
1/16" ferrules	B02-2125
1/8" ferrules	B02-2133
1/4" ferrules	B02-2141
Reducing Ferrules	
1/8" to 0.4mm Vespel	B02-2135
1/8" to 0.5mm Vespel	B02-2136
1/8" to 0.8mm Vespel	B02-2137
1/8" to 1/16" Vespel	B02-2138
1/4" to 1/16" ferrules	B02-2143
1/4" To 1/8" ferrules	B02-2144

Agilent style—Short ferrule, especially for Agilent inlet systems: 4890,5890 and 6890

Graphite Ferrules—Sold 10/pack Except as Noted

- Upper temperature limit:450°C
- High-purity Graphite; Preferred for capillary GC use
- Ideal for glass-to-metal connections; doesn't stick to glass
- Reusable if not over-tightened

Ordering Information

Cat.No.	Description
Straight Ferrules—for tubing with ODs as listed	
B02-2101	1/16" Graphite Ferrule
B02-2109	1/8" Graphite Ferrule
B02-2116	1/4" Graphite Ferrule
Short Ferrules for Agilent Inlets	
B02-2001	1/16" to 0.4mm Graphite Ferrule
B02-2002	1/16" to 0.5mm Graphite Ferrule
B02-2003	1/16" to 0.8mm Graphite Ferrule
B02-2004	1/16" to 1.0mm Graphite Ferrule
Capillary Column Ferrules	
B02-2102	1/16" to 0.4mm Graphite Ferrule
B02-2103	1/16" to 0.5mm Graphite Ferrule
B02-2104	1/16" to 0.8mm Graphite Ferrule
B02-2105	1/16" to 1.0mm Graphite Ferrule
B02-2106	1/16" to 1.2mm Graphite Ferrule
Reducing Ferrules	
B02-2110	1/8" to 0.4mm Graphite Ferrule
B02-2111	1/8" to 0.5mm Graphite Ferrule
B02-2112	1/8" to 0.8mm Graphite Ferrule
B02-2113	1/8" to 1/16" Graphite Ferrule
B02-2117	1/4" to 1.0mm Graphite Ferrule
B02-2118	1/4" to 0.4mm Graphite Ferrule
B02-2119	1/4" to 0.5mm Graphite Ferrule
B02-2120	1/4" to 0.8mm Graphite Ferrule
B02-2121	1/4" to 1/16"Graphite Ferrule
B02-2122	1/4" to 1/8"Graphite Ferrule
B02-2123	1/4" to 6.0mm Graphite Ferrule
B02-2124	1/4" to 4.0mm Graphite Ferrule

Vespe/Graphite Ferrules –Sold in Packages of 10

- Upper temperature limit:450°C
- Made from quality DuPont polyimide/graphite blend
- Recommended for GC/MS interface applications

Ordering Information

Cat.No.	Description
Straight Ferrules-for tubing with ODs as listed	
B02-2145	1/16" V/G Ferrules
B02-2153	1/8" V/G Ferrules
B02-2160	1/4" V/G
Short Ferrules for Agilent Inlet	
B02-2005	1/16" to 0.4mm V/G Ferrules
B02-2006	1/16" to 0.5mm V/G Ferrules
B02-2007	1/16" to 0.8mm V/G
Capillary Column Ferrules	
B02-2146	1/16" to 0.4mm V/G Ferrules
B02-2147	1/16" to 0.5mm V/G Ferrules
B02-2148	1/16" to 0.8mm V/G
B02-2149	1/16" to 1.0mm V/G Ferrules
B02-2150	1/16" to 1.2mm V/G
Reducing Ferrules	
B02-2154	1/8" to 0.4mm V/G Ferrules
B02-2155	1/8" to 0.5mm V/G Ferrules
B02-2156	1/8" to 0.8mm V/G
B02-2157	1/8" to 1/16" V/G Ferrules
B02-2161	1/4" to 0.4mm V/G
B02-2162	1/4" to 0.5mm V/G
B02-2163	1/4" to 6.0mm V/G Ferrules
B02-2164	1/4" to 0.8mm V/G Ferrules
B02-2166	1/4" to 1/16" V/G Ferrules
B02-2167	1/4" to 1/8" V/G

Teflon Ferrules –Sold in Packages of 10

- Upper temperature limit:250°C
- 100% Teflon;completely inert

Ordering Information

Cat.No.	Description
Straight Ferrules-for tubing with ODs as listed	
B02-2169	1/16" Teflon
B02-2176	1/8" Teflon
B02-2182	1/4" Teflon
Capillary Column Ferrules	
B02-2170	1/16" to 0.3mm Teflon
B02-2171	1/16" to 0.4mm Teflon
B02-2172	1/16" to 0.5mm Teflon
B02-2173	1/16" to 0.8mm Teflon
B02-2174	1/16" to 1.0mm Teflon
B02-2175	1/16" to 1.2mm Teflon



Bonna-Agela Technologies

BETTER SOLUTION FOR CHROMATOGRAPHY

Cat.No.	Description
Reducing Ferrules	
B02-2177	1/8" to 0.4mm Teflon
B02-2178	1/8" to 0.5mm Teflon
B02-2179	1/8" to 0.8mm Teflon
B02-2180	1/8" to 1/16" Teflon
B02-2183	1/4" to 6mm Teflon
B02-2185	1/4" to 1/16" Teflon
B02-2186	1/4" To 1/8" Teflon
B02-2187	1/4" to 3/16" Teflon

Column Scribe

Used to cut capillary tubing. Simply pull one smooth edge of the hard ceramic scribe (tilted about 45 degrees) across the column to lightly score the fused silica. Bend the column opposite the score and the column separate cleanly.

Ordering Information

Cat.No.	Description
B02-1006	Column Scribe, 10/pk

1/32" Ultra Low Mass External Unions

For capillary tubing 0.1 to 0.32mm I.D. It has very low mass and can be hand-tightened to seal. Use only with 1/32" fused silica adapters; metal ferrules cannot be used.

Ordering Information

Cat.No.	Description
B02-4001	1/32" Union, Bore 0.25mm
B02-4002	1/32" Union, Bore 0.50mm
B02-4003	1/32" Union, Bore
B02-4004	1/32" 1/32" Fused Silica Tubing Adapter Tubing o.d. <0.25mm
B02-4005	1/32" Fused Silica Tubing Adapter Tubing o.d. 0.25-0.4mm
B02-4006	1/32" Fused Silica Tubing Adapter Tubing o.d. 0.5mm

USA

- Address: 2038A Telegraph Rd. Wilmington, DE 19808, USA
- Tel: (302) 4388798
- Fax: (302) 6369339
- E-mail: info@agela.com
- Website: <http://www.agela.com>



ABN: ZL-04102001